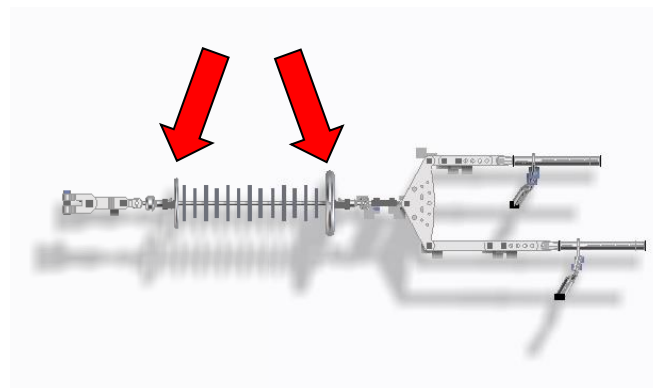
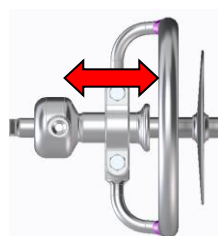


ASSEMBLY INSTRUCTIONS	AI 025
CORONA RING	

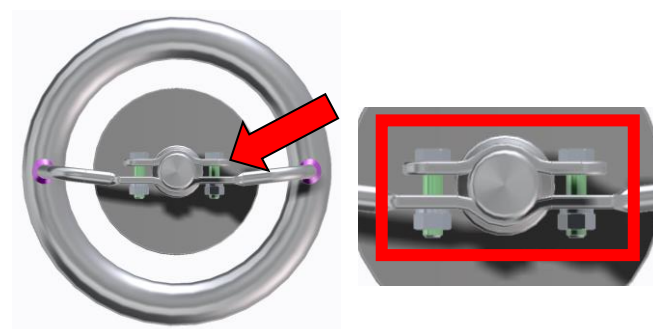
1. Loosen the bolts holding the clamping plate on to the strap; just enough to undo the plate and leave the bolts on the strap.
2. Place clamping plate of the corona ring strap onto the fitting, hold in place while returning the strap and hand tighten the bolts equally.
3. The smaller corona ring has to be installed on the tower end and the larger corona ring onto the live end.



4. Move the corona ring assembly to the correct position according the marking or the drawing.

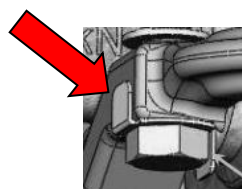


5. Adjust the bolts on the corona ring assembly, so that the strap and the body are parallel.

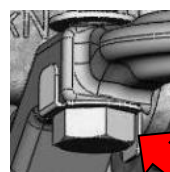


6. Using a calibrated torque wrench, tighten the bolts equally to the torque listed in the drawing.

7. Ensure that the safety plates are flush against the body.



8. Once tightened, push the safety plates up against the head of the bolt to ensure no loosening occurs.



REV.	-	11-09-2017 / JOL		LANGUAGE	PAGE
				EN	1 of 1